

Parts Included



Wave Suction Band



2 oz. Silicone Adhesive



CD130BL

Large Wave Suction Band

Circumference 37cm - 49cm, Width 7.62cm, Thickness 4mm

Fabrication Instructions



Weight limit: 265 lbs.

2-year warranty against manufacturer defects, excessive wear or breakage.

External Prosthetic Components



CD130BL.revA.01302024



EC REP

Advena Limited
Tower Business Centre
2nd Flr, Tower Street
Swatar, BKR 4013
Malta

Wave Suction Band sizes

Part Number	Size	Circumference	Width	Thickness
CD130BS	Small	16cm - 25cm	7.62cm	4mm
CD130BM	Medium	25cm - 37cm	7.62cm	4mm
CD130BL	Large	37cm - 49cm	7.62cm	4mm
CD130BX	Extra Large	49cm - 64cm	7.62cm	4mm
CD130BXX	Extra Extra Large	64cm - 77cm	7.62cm	4mm

EN | Instructions for Use
DE | Gebrauchsanweisung
FR | Notice d'utilisation
ES | Instrucciones para el uso
IT | Istruzioni per l'uso
NO | Bruksanvisning
DA | Brugsanvisning
SV | Bruksanvisning
EL | Οδηγίες Χρήσης
FI | Käyttöohjeet
NL | Gebruiksaanwijzing
PT | Instruções de Utilização

PL | Instrukcja użytkowania
CS | Návod k použití
TR | Kullanım Talimatları
RU | Инструкция по использованию
JA | 取扱説明書
ZH | 中文说明书
KO | 사용 설명서



www.coyote.us/instructions-waveband



Manufactured by Coyote®
419 N. Curtis Rd., Boise, Idaho 83706
(208) 429-0026 | www.coyote.us



Attaching Seal Band



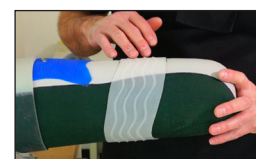
1 With liner on patient position band in desired location.



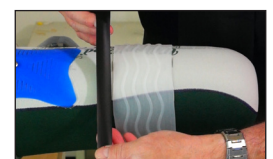
2 Mark band location on distal and proximal sides of band.



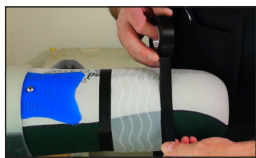
3



4 For unconventional band position mark band in multiple locations.



5 Wrap the liner with electrical tape or vinyl tape next to the band without over lapping it.



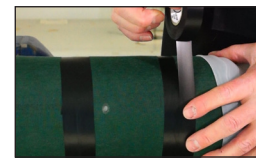
6 Tape off both ends of the band.



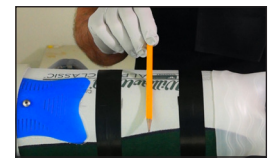
7 Remove the band



8 Add extra tape to protect a wider area.



9



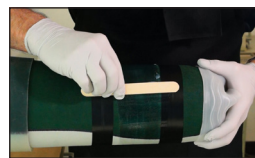
10 Put a bead of silicone adhesive around the liner about the thickness of a pencil.



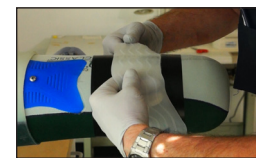
11 Smooth the silicone out with a tongue depressor. Make sure to saturate the material.



12 Check the edges for areas that need more silicone adhesive.



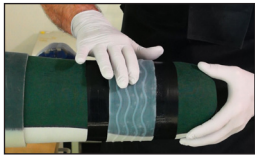
13 Smooth the silicone out.



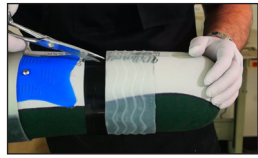
14 Carefully place the seal band over the glued area.



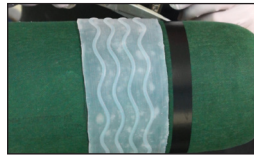
15 Center the band with tape to the edges.



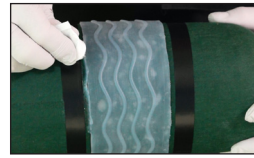
16 Push the air bubbles out from under the band



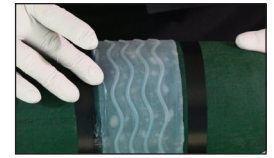
17 Remove the tape from the liner.



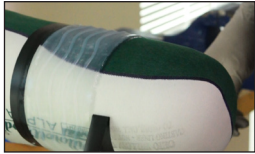
18 Create a seal band edge with silicone adhesive.



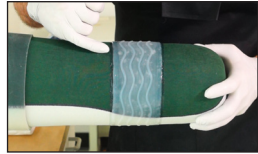
19 Roll tape next to band edge approximately 1/4 inch space from band.



20 Smooth silicone into fabric and band. Making a sealed edge.



21 Remove tape.



22 Check your work and let the silicone set up for at least two hours before putting it on patient.

Wave Suction Band sizes

Part Number	Size	Circumference	Width	Thickness
CD130BS	Small	16cm - 25cm	7.62cm	4mm
CD130BM	Medium	25cm - 37cm	7.62cm	4mm
CD130BL	Large	37cm - 49cm	7.62cm	4mm
CD130BX	Extra Large	49cm - 64cm	7.62cm	4mm
CD130BXX	Extra Extra Large	64cm - 77cm	7.62cm	4mm

Lay-up instructions are helpful hints on how to work with the lock and connector. Actual lay-ups are responsibility of the technician and/or practitioner.