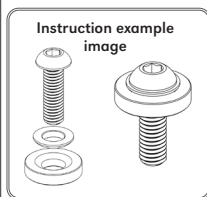
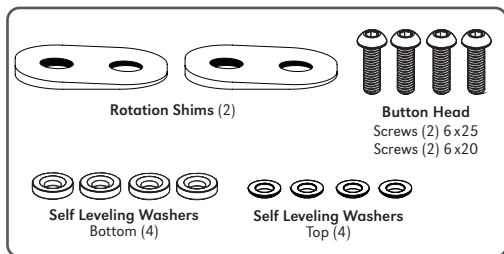


CD209FSP

Mini Flexion Shim Pair

Shims are designed to adjust planter flex or dorsiflex for
Coyote[®] Dynamic Struts



6 month warranty against manufacturer defects, excessive wear or breakage.
External Prosthetic Components



CD209FSP.Post.revA.06262024



Manufactured by Coyote[®]
419 N. Curtis Rd., Boise, Idaho 83706 USA
(208) 429-0026 | www.coyote.us



Advena Limited
Tower Business Centre
2nd Flr, Tower Street
Swatar, BKR 4013
Malta

Instructions

See Instruction example image on front.

The Flexion shim is designed for planter flex and dorsiflex adjustment.

- 1 Install the shims between the AFO shell and the strut to adjust the foot shell or cuff in a planter flex or dorsiflex direction.
- 2 The shims are not designed to be stacked.
- 3 Make sure the screws are all the way

through all the threaded post holes and not sticking out past the inside of the mounting plate.

- 4 Make sure the washers are flush and seat flat with the strut.
- 5 When all adjustments are made take the brace apart and Loctite® the threads with blue 242 Loctite®. Torque 5-8 Nm.
- 6 Tighten the screws after a couple weeks of use, also at follow up appointments, re-Loctite® if needed. Always torque 5-8 Nm.

⚠ ATTENTION

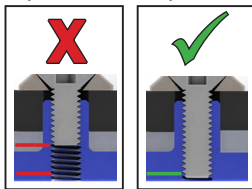
Always, **LOCTITE®** and torque to manufacturer specifications.

1. The instructions for this device cover a very specific method of fabrication, and we understand that a multitude of methods could be used. The fabricated device is the sole responsibility of the fabricator.
2. Always use Loctite® Blue 242 on screw threads. Torque between 5 Nm and 8 Nm in even distribution.
3. Tighten the screws after a couple weeks of use, also at follow up appointments, re-Loctite® if needed.
4. Use the 6x20mm (top mounting plate) and 6x22mm (bottom mounting plate) screws provided with typical components for the (CD209S, CD209SS, CD209M, CD209MS, CD209R, CD209RS). In atypical setups, longer screws may be needed. Always use screws class 10.9 or better.

Make sure the screws are all the way through the threaded post holes and flush with the inside of the plate. Be sure the screw length fully seats into face plate not just the post, longer screws may be needed depending on the strut and brace thickness.

See example images below.

A 6 month limited warranty applies to the Mini Dynamic Strut (CD209S, CD209SS, CD209M, CD209MS, CD209R, CD209RS) go to www.coyote.us for details.



See instructions online.

www.coyote.us/instructions-dynamicstrut

EN | Instructions for Use

DE | Gebrauchsanweisung

FR | Notice d'utilisation

ES | Instrucciones para el uso

IT | Istruzioni per l'uso

NO | Bruksanvisning

NL | Gebruiksaanwijzing

PT | Instruções de Utilização

PL | Instrukcja użytkowania

RU | Инструкция по использованию

CS | Návod k použití

JA | 取扱説明書

ZH | 中文说明书

KO | 사용 설명서

DA | Brugsanvisning

SV | Bruksanvisning

EL | Οδηγίες Χρήσης

FI | Käyttöohjeet

TR | Kullanım Talimatları

