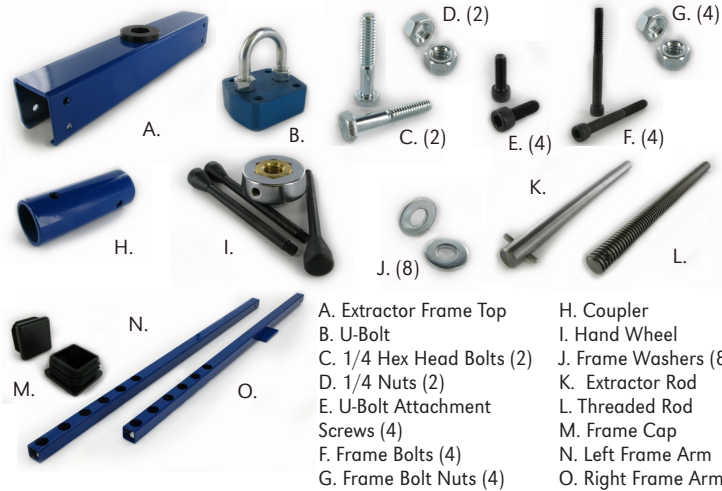


Parts Included



- A. Extractor Frame Top
- B. U-Bolt
- C. 1/4 Hex Head Bolts (2)
- D. 1/4 Nuts (2)
- E. U-Bolt Attachment Screws (4)
- F. Frame Bolts (4)
- G. Frame Bolt Nuts (4)
- H. Coupler
- I. Hand Wheel
- J. Frame Washers (8)
- K. Extractor Rod
- L. Threaded Rod
- M. Frame Cap
- N. Left Frame Arm
- O. Right Frame Arm

CD301

Socket Extractor

Fabrication Instructions

- EN | Instructions for Use
- DE | Gebrauchsanweisung
- FR | Notice d'utilisation
- ES | Instrucciones para el uso
- IT | Istruzioni per l'uso
- NO | Bruksanvisning
- DA | Brugsanvisning
- SV | Bruksanvisning
- EL | Οδηγίες Χρήσης
- FI | Käyttöohjeet
- NL | Gebruiksaanwijzing
- PT | Instruções de Utilização
- PL | Instrukcja użytkowania
- CS | Návod k použití
- TR | Kullanım Talimatları
- RU | Инструкция по использованию
- JA | 取扱説明書
- ZH | 中文说明书
- KO | 사용 설명서



www.coyote.us/instructions



8 11576 02058 9



Manufactured by Coyote®
419 N. Curtis Rd., Boise, Idaho 83706
(208) 429-0026 | www.coyote.us



CD301.revB.11282022

Correctly Using the Coyote Socket Extractor

- The threaded rod and wheel both come pre-lubricated, however it is a good idea to lubricate these items about every other month.
- Before pouring mold drill a 1/4" hole into the proximal end of the pipe you are going to use in the mold.
- With a bench vice, clamp the bottom of the extractor frame.
- DO NOT use a cheater bar or other leverage on the handle. This will cause damage, if it takes that much pressure to get the socket out it should not be pulled. Movement of the cast in the socket will be seen quickly and without too much turning if it will pull easily.



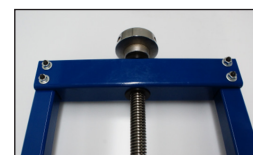
- 1** Slide right and left frame arms into top extractor frame.



- 2** Using provided nuts, bolts, and washers, screw both arms into place on top frame. Ensure washers are on both sides of frame.



- 3** Using allen wrench and open wrench to tighten nuts.



- 4** Drop threaded rod into bushing.



- 5** Thread hand wheel on to threaded rod.



- 6** Screw in handles.



- 7** Attach coupler to threaded rod with supplied screws.



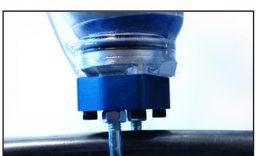
- 8** Slide extractor rod through frame arm holes and through extractor U bolt.



- 9** Trim as close to the trim lines on the socket as possible.



- 10** Slide coupler over threaded rod and insert provided bolt into hole. Insert second bolt into socket pipe hole.



- 11** Using provided screws attach the anchor to the distal end of the socket to be pulled. Retro fitable for pediatric sockets.



- 12** Slide anchor rod through extractor frame and anchor. Turn wheel clockwise to extract mold. pediatric sockets.