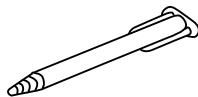
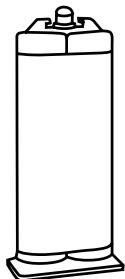


Parts Included



Small Mix Tip (1)

Tech Tip -

Store all glue in cool environment for longevity.

Coyote Quik Glue 50cc

EN | Instructions for Use
DE | Gebrauchsanweisung
FR | Notice d'utilisation
ES | Instrucciones para el uso
IT | Istruzioni per l'uso
NO | Bruksanvisning
DA | Brugsanvisning
SV | Bruksanvisning
EL | Οδηγίες Χρήσης
FI | Käyttöohjeet
NL | Gebruiksaanwijzing
PT | Instruções de Utilização
PL | Instrukcja użytkowania

CS | Návod k použití
TR | Kullanım Talimatları
RU | Инструкция по использованию
JA | 取扱説明書
ZH | 中文说明书
KO | 사용 설명서



www.coyote.us/instructions-quickglue



Manufactured by Coyote®
419 N. Curtis Rd., Boise, Idaho 83706
(208) 429-0026 | www.coyote.us



QUIK GLUE

CD4250

BLACK - 50cc - 90 second set time



Made in U.S.A.

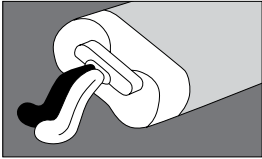


CD4250.revD.02082023

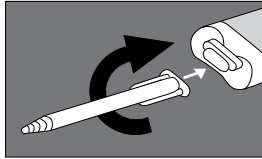
8 11576 02135 7



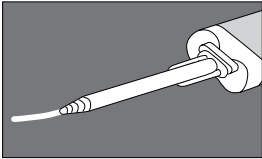
Instructions



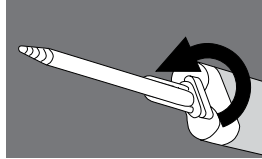
- 1** Purge the cartridge. Snip off the tip. Insert cartridge into dispenser gun. Expel a small amount of adhesive to purge the cartridge.



- 2** Install mix tip. Line up mix tip appropriately and twist into place. Tips can only be used once.



- 3** Run a test bead approx. 1" in length. Store unused portion by leaving the mix tip on when done.



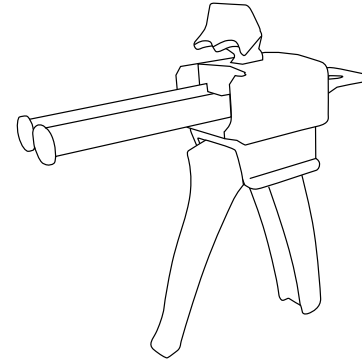
- 4** Leave used tip attached as a cap until next use to keep glue from drying out in the tubes. When your ready to use the glue again remove old tip and replace with a new tip.

CAUTION

1. Read carefully BEFORE applying adhesive to ensure proper adhesion.
2. Quik Glue sets fast. To ensure a proper bond, work quickly. Refrigerate the cartridge to slow down work time.
3. Smaller bead size may affect cure time.

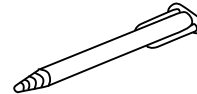
Parts Sold Separately

CDDMA51 | Dispenser is required for use (sold separately)



CD401 | 6-Pack Extra Mix Tips for 50 cc Cartridge.

CD402 | 12-Pack Extra Mix Tips for 50 cc Cartridge.



Contact Coyote for a MSDS for this product.
(208) 429-0026 or coyote@coyote.us