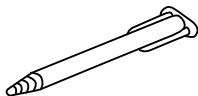
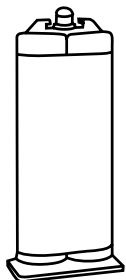


Parts Included



Small Mix Tip (1)

Tech Tip -

Store all glue in cool environment for longevity.

Coyote Quik Glue 50cc

EN | Instructions for Use

DE | Gebrauchsanweisung

FR | Notice d'utilisation

ES | Instrucciones para el uso

IT | Istruzioni per l'uso

NO | Bruksanvisning

DA | Brugsanvisning

SV | Bruksanvisning

EL | Οδηγίες Χρήσης

FI | Käyttöohjeet

NL | Gebruiksaanwijzing

PT | Instruções de Utilização

PL | Instrukcja użytkowania

CS | Návod k použití

TR | Kullanım Talimatları

RU | Инструкция по использованию

JA | 取扱説明書

ZH | 中文说明书

KO | 사용 설명서



www.coyote.us/instructions-quickglue

Manufactured by Coyote®

419 N. Curtis Rd., Boise, Idaho 83706

(208) 429-0026 | www.coyote.us



Coyote®

QUIK GLUE

CD4150

WHITE - 50cc - 30 second set time



Made in U.S.A.

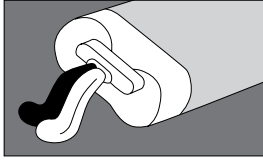


CD4150.revD.02082023

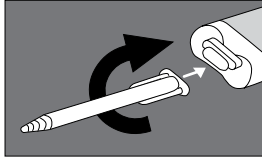
8 11576 02070 1



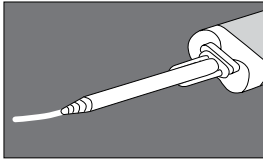
Instructions



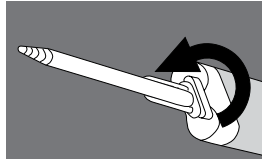
- 1** Purge the cartridge. Snip off the tip. Insert cartridge into dispenser gun. Expel a small amount of adhesive to purge the cartridge.



- 2** Install mix tip. Line up mix tip appropriately and twist into place. Tips can only be used once.



- 3** Run a test bead approx. 1" in length. Store unused portion by leaving the mix tip on when done.



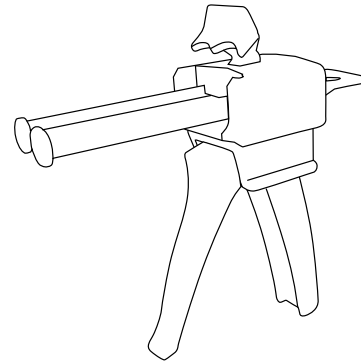
- 4** Leave used tip attached as a cap until next use to keep glue from drying out in the tubes. When your ready to use the glue again remove old tip and replace with a new tip.

CAUTION

1. Read carefully BEFORE applying adhesive to ensure proper adhesion.
2. Quik Glue sets extremely fast. To ensure a proper bond, work very quickly. Refrigerate the cartridge to slow down the working time.
3. Smaller bead size may affect cure time.

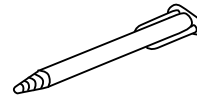
Parts Sold Separately

CDDMA51 | Dispenser is required for use (sold separately)



CD401 | 6 - Pack Extra Mix Tips for 50 cc Cartridge.

CD402 | 20 - Pack Extra Mix Tips for 50 cc Cartridge.



Contact Coyote for a MSDS for this product.
(208) 429-0026 or www.coyote@coyote.us