

## Parts Included



Wave Suction Band



2 oz. Silicone Adhesive

### Wave Suction Band sizes

Part Number	Size	Circumference	Width	Thickness
CD130BS	Small	16cm - 25cm	7.62cm	4mm
CD130BM	Medium	25cm - 37cm	7.62cm	4mm
CD130BL	Large	37cm - 49cm	7.62cm	4mm
CD130BX	Extra Large	49cm - 64cm	7.62cm	4mm
CD130BXX	Extra Extra Large	64cm - 77cm	7.62cm	4mm

EN | Instructions for Use  
 DE | Gebrauchsanweisung  
 FR | Notice d'utilisation  
 ES | Instrucciones para el uso  
 IT | Istruzioni per l'uso  
 NO | Bruksanvisning  
 DA | Brugsanvisning  
 SV | Bruksanvisning  
 EL | Οδηγίες Χρήσης  
 FI | Käyttöohjeet  
 NL | Gebruiksaanwijzing  
 PT | Instruções de Utilização

PL | Instrukcja użytkowania  
 CS | Návod k použití  
 TR | Kullanım Talimatları  
 RU | Инструкция по использованию  
 JA | 取扱説明書  
 ZH | 中文说明书  
 KO | 사용 설명서



[www.coyote.us/instructions-waveband](http://www.coyote.us/instructions-waveband)



Manufactured by Coyote®  
 419 N. Curtis Rd., Boise, Idaho 83706  
 (208) 429-0026 | [www.coyote.us](http://www.coyote.us)



# CD130BS

## Small Wave Suction Band

Circumference 16cm - 25cm, Width 7.62cm, Thickness 4mm

### Fabrication Instructions



Weight limit: 265 lbs.

2-year warranty against manufacturer defects, excessive wear or breakage.

#### External Prosthetic Components



CD130BS.revA.10272021



EC REP

Advena Limited  
 Tower Business Centre  
 2nd Flr, Tower Street  
 Swatar, BKR 4013  
 Malta

## Attaching Seal Band



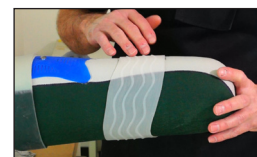
**1** With liner on patient position band in desired location.



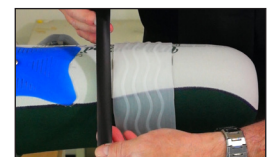
**2** Mark band location on distal and proximal sides of band.



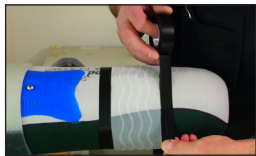
**3**



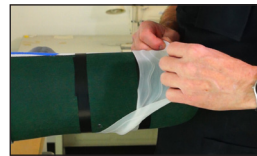
**4** For unconventional band position mark band in multiple locations.



**5** Wrap the liner with electrical tape or vinyl tape next to the band without over lapping it.



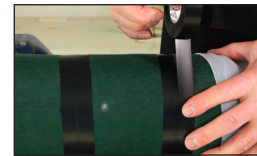
**6** Tape off both ends of the band.



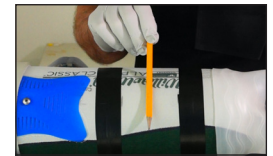
**7** Remove the band



**8** Add extra tape to protect a wider area.



**9**



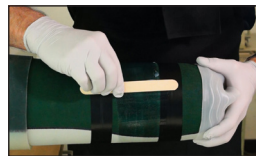
**10** Put a bead of silicone adhesive around the liner about the thickness of a pencil.



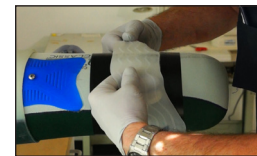
**11** Smooth the silicone out with a tongue depressor. Make sure to saturate the material.



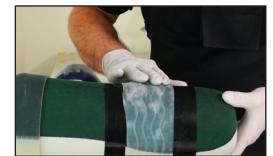
**12** Check the edges for areas that need more silicone adhesive.



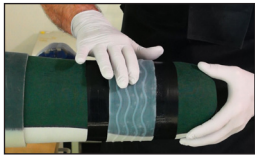
**13** Smooth the silicone out.



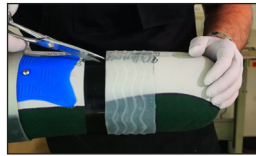
**14** Carefully place the seal band over the glued area.



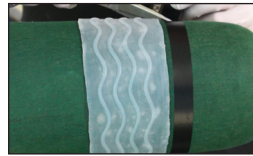
**15** Center the band with tape to the edges.



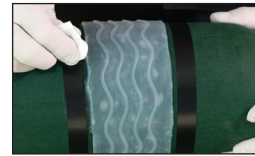
**16** Push the air bubbles out from under the band



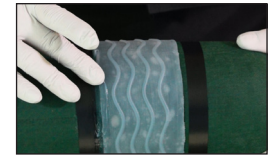
**17** Remove the tape from the liner.



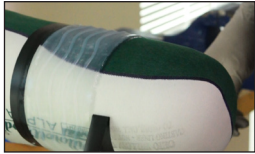
**18** Create a seal band edge with silicone adhesive.



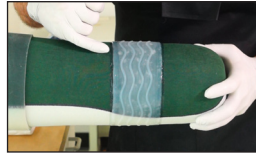
**19** Roll tape next to band edge approximately 1/4 inch space from band.



**20** Smooth silicone into fabric and band. Making a sealed edge.



**21** Remove tape.



**22** Check your work and let the silicone set up for at least two hours before putting it on patient.

#### Wave Suction Band sizes

Part Number	Size	Circumference	Width	Thickness
CD130BS	Small	16cm - 25cm	7.62cm	4mm
CD130BM	Medium	25cm - 37cm	7.62cm	4mm
CD130BL	Large	37cm - 49cm	7.62cm	4mm
CD130BX	Extra Large	49cm - 64cm	7.62cm	4mm
CD130BXX	Extra Extra Large	64cm - 77cm	7.62cm	4mm

Lay-up instructions are helpful hints on how to work with the lock and connector. Actual lay-ups are responsibility of the technician and/or practitioner.