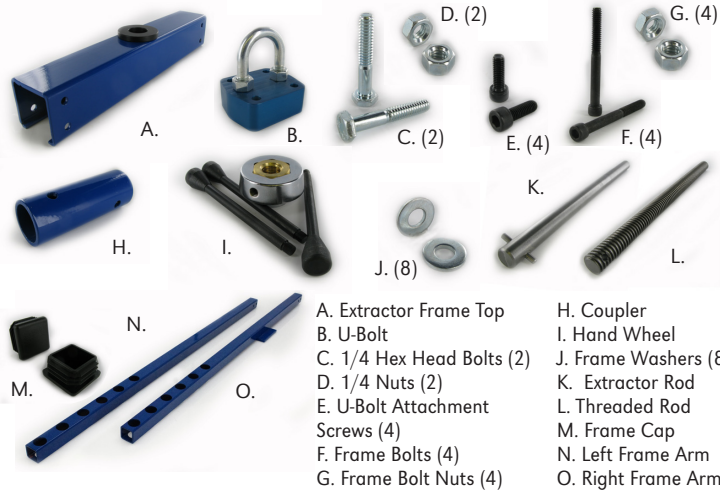


Parts Included



- A. Extractor Frame Top
- B. U-Bolt
- C. 1/4 Hex Head Bolts (2)
- D. 1/4 Nuts (2)
- E. U-Bolt Attachment Screws (4)
- F. Frame Bolts (4)
- G. Frame Bolt Nuts (4)
- H. Coupler
- I. Hand Wheel
- J. Frame Washers (8)
- K. Extractor Rod
- L. Threaded Rod
- M. Frame Cap
- N. Left Frame Arm
- O. Right Frame Arm

CD301

Socket Extractor

Fabrication Instructions

- EN | Instructions for Use
- DE | Gebrauchsanweisung
- FR | Notice d'utilisation
- ES | Instrucciones para el uso
- IT | Istruzioni per l'uso
- NO | Bruksanvisning
- DA | Brugsanvisning
- SV | Bruksanvisning
- EL | Οδηγίες Χρήσης
- FI | Käyttöohjeet
- NL | Gebruiksaanwijzing
- PT | Instruções de Utilização
- PL | Instrukcja użytkowania
- CS | Návod k použití
- TR | Kullanım Talimatları
- RU | Инструкция по использованию
- JA | 取扱説明書
- ZH | 中文说明书
- KO | 사용 설명서



www.coyote.us/instructions

Made in U.S.A.



Manufactured by Coyote®
419 N. Curtis Rd., Boise, Idaho 83706
(208) 429-0026 | www.coyote.us



CD301.revB.10272021

Correctly Using the Coyote Socket Extractor

The threaded rod and wheel both come pre-lubricated, however it is a good idea to lubricate these items about every other month.

Before pouring mold drill a 1/4" hole into the proximal end of the pipe you are going to use in the mold. With a bench vice, clamp the bottom of the extractor frame.



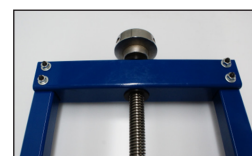
- 1** Slide right and left frame arms into top extractor frame.



- 2** Using provided nuts, bolts, and washers, screw both arms into place on top frame. Ensure washers are on both sides of frame.



- 3** Using allen wrench and open wrench to tighten nuts.



- 4** Drop threaded rod into bushing.



- 5** Thread hand wheel on to threaded rod.



- 6** Screw in handles.



- 7** Attach coupler to threaded rod with supplied screws.



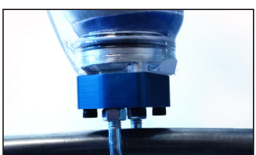
- 8** Slide extractor rod through frame arm holes and through extractor U bolt.



- 9** Trim as close to the trim lines on the socket as possible.



- 10** Slide coupler over threaded rod and insert provided bolt into hole. Insert second bolt into socket pipe hole.



- 11** Using provided screws attach the anchor to the distal end of the socket to be pulled. Retro fitable for pediatric sockets.



- 12** Slide anchor rod through extractor frame and anchor. Turn wheel clockwise to extract mold. pediatric sockets.