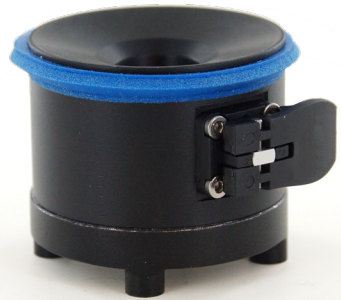




CD122E

Easy-Off Drop-In Gen2

Fabrication Instructions



Weight limit: 265 lbs.

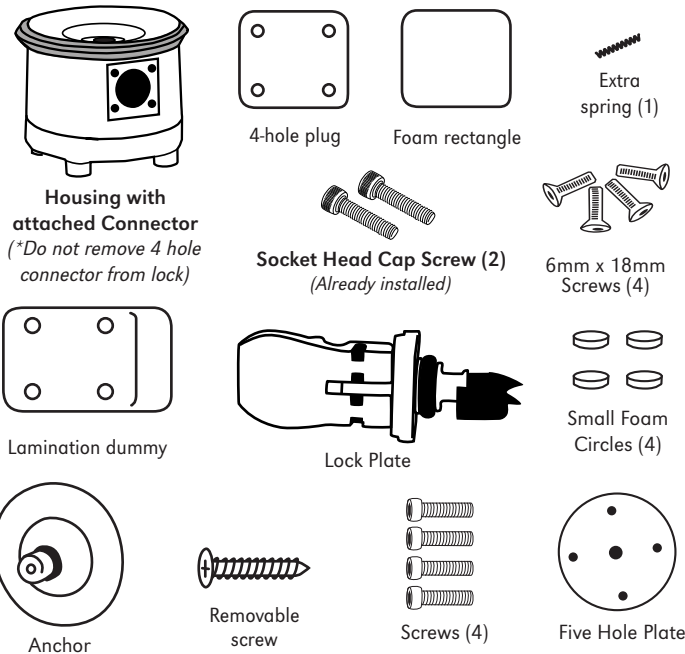
2-year warranty against manufacturer defects, excessive wear or breakage.

Patent No. 6334876 Made in U.S.A.
External Prosthetic Components



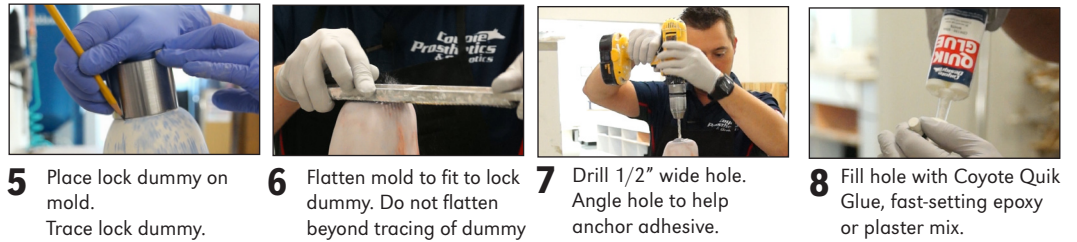
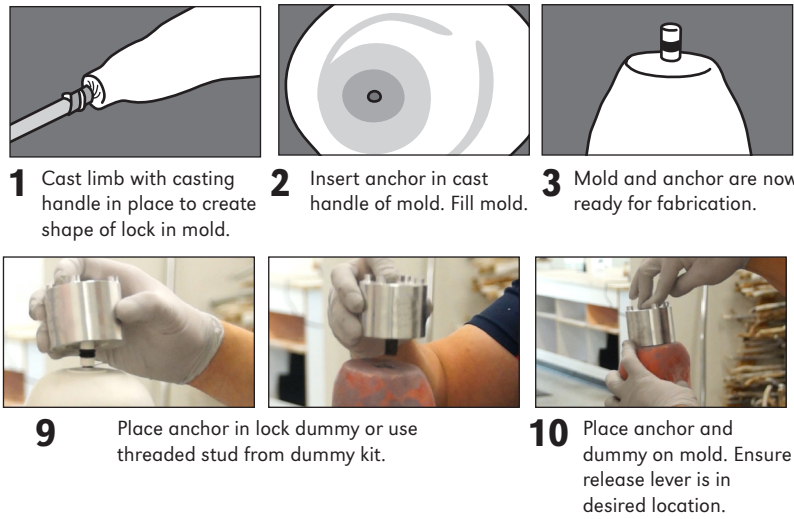
Advena Limited
Tower Business Centre
2nd Flr, Tower Street
Swatar, BKR 4013
Malta

Parts Included



Installing Lock on Mold

If using casting handle, begin with Step 1.
If NOT using casting handle, skip to Step 5.

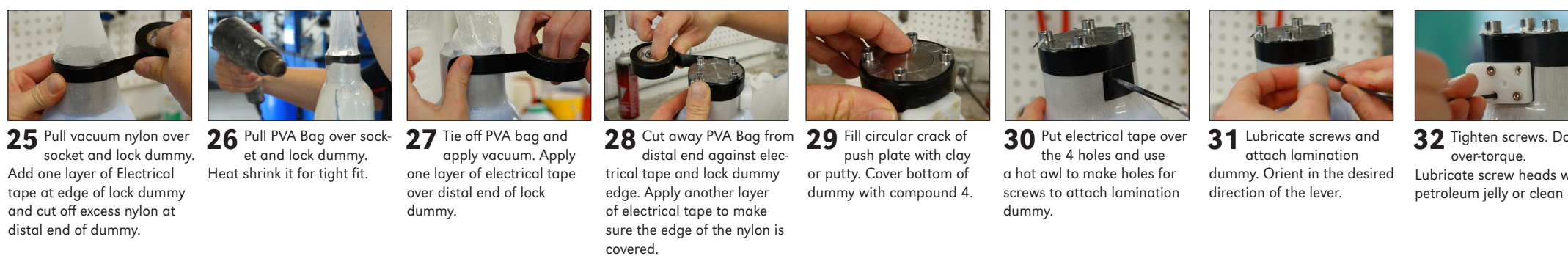


Need more help?
Fabrication videos can also be viewed at www.coyote.us/video

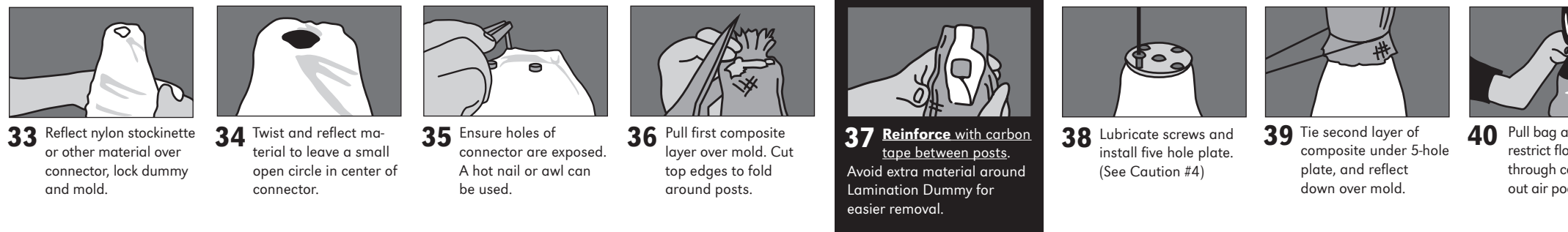
Test Socket Fabrication



Preparation for Lamination



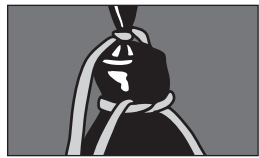
Lay-up



Lay-up Continued



41 Toward end of lamination, place tape over 5-hole plate to squeeze excess resin out of lamination.



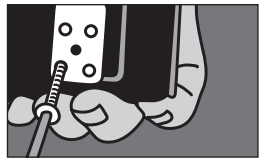
42 String can be tied between fabrication plug and top of lock to ensure seal (see Caution #6).



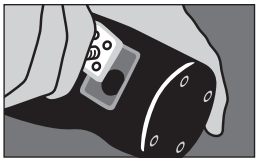
43 Expose edge and remove excess lamination.



44 Remove 5-hole plate.



45 Expose lamination dummy and remove screws.



46 Extract lamination dummy with removal screw.



47 Smooth out edges and bottom of socket. Remove socket in traditional fashion or with socket extractor.



48 Use the Threaded Bolt and 3/4" socket wrench to push the dummy out.

49 Do not remove connector from Drop-In Easy-Off Lock.

50 Remove internal components from the Drop-In Easy-Off Lock with a 2mm allen wrench. Be careful not to lose springs during removal.

51 Wipe down O-ring on Drop-In lock with alcohol before inserting.

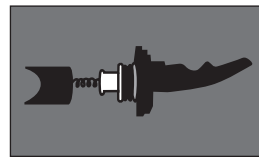


52 Press lock into place and attach pyramid with supplied 6mm x 18 mm screws.

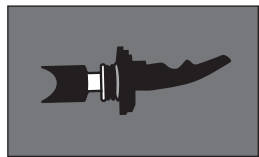
53 Attaching pyramid to connector will draw lock into place.

54 Use 6x18mm screws provided (see Caution #2 and #4) and Loctite® Blue 242 when attaching pyramid. Torque provided connector screws to 10 Nm.

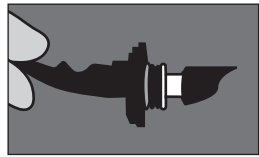
Installing Lever Assembly



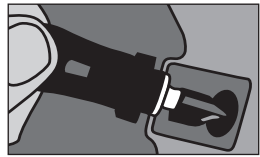
55 Make sure that lock is placed properly, as it may have dislodged during shipping. At right, a properly assembled lever.



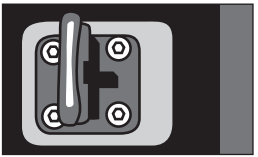
56 Line up lever assembly in groove and insert assembly.



57 Line up long side of rectangle with anterior posterior aspect of the socket.



58 Install 4 screws. DO NOT over-torque.



59 Lever is shown open (UNLOCKED). When lever is flush, lock is engaged (CLOSED).

NOTES FOR FLEXIBLE INNER SOCKET:

If you are using a flexible inner socket, visit our video gallery at coyotedesign.com for tutorials and instructions.



The Threaded bolt is used in conjunction with the push plate to push the dummy out of the socket.

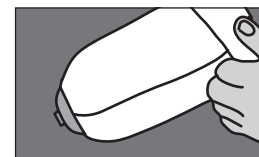


When attaching the dummy to the cast. The Drop-In Anchor or Threaded Stud can be used with the Drop-In Easy-Off Lock Dummy.

Two Part Pin & Solid Pin install and proper seating Instructions See instruction video called at www.coyote.us/easyoff

Poor seating leads to premature lock wear. The pin spacers are used to adjust the pin to seat with any liner. There should be no play between the lock and the liner when fully engaged.

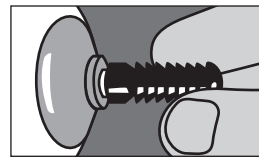
It is best to check seating using the Fitting Lock (CD103FL) which is reinforced to make pin evaluation fast and easy.



i Roll liner of choice onto patient. Add desired number of sock ply if used.



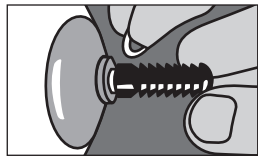
ii Install pin on liner. Engage lock to check for play between lock and liner.



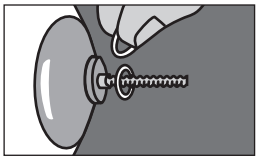
iii If there is play, loosen pin away from adaptor screw and liner.



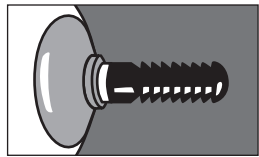
iv Reengage lock to check for play. Repeat until lock seats completely.



v Gap is created between lock and liner. Based on gap created by loosening pin, add spacers. (See Caution #5)



vi Based on the gap created by loosening pin, install appropriate number of pin spacers on adaptor (see Caution #2).



vii Replace pin on adaptor, making sure base fits snugly on pin spacers.



viii After installing pin spacers, re-engage lock to be sure there is no play.



viii Apply Loctite® Blue 242 to threads of lock pin and adaptor screw. Pin needs to be tightened with a 7/16" or 11 mm wrench. (See Caution #4, #5, #12)

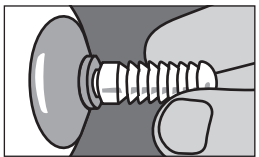
(Chart is a guideline, NOT a guarantee of seating. Verify seating.)

Easy-Off Lock with P8 Pin

Liner	Size	Spacers used	No. of clicks
Alpha Original	M	1	5
Alpha Select	M	0	5
Ossur	26.5	1	6
Alps	26	1	5



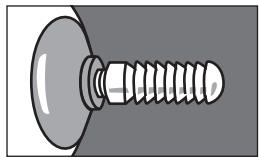
H1 Install pin on liner. Engage lock to check for play between lock and liner.



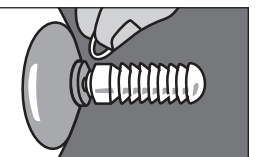
H2 If there is play, loosen pin away from adaptor screw and liner.



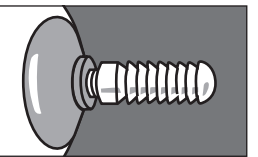
H3 Reengage lock to check for play. Repeat until lock seats completely. Remove lock.



H4 If a Gap is created between the pin and liner.



H5 Based on the size of the gap created by loosening pin, install appropriate number of pin spacers on threaded end (see Caution #5).



H6 Replace pin on adaptor, making sure base fits snugly on pin spacers.



H7 After installing pin spacers, re-engage lock to be sure there is no play.



H8 Apply Loctite® Blue 242 to threads of lock pin. Pin may need to be tightened with a 7/16" or 11 mm wrench. (See Caution #5)

Documenting Suction

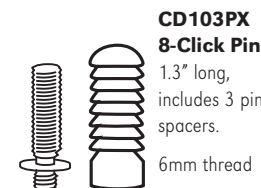
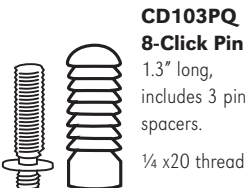
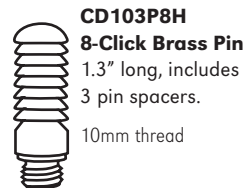
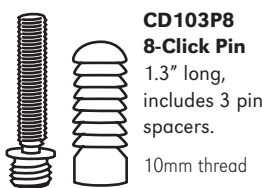
We view suction not as a component or a code, but as a function. Pistoning and milking can be reduced by maintaining a suction socket when using this lock.

- The suction feature of the lock can be demonstrated and documented very simply.
- Have the amputee step into the lock and seat completely.
- Lever assembly WITHOUT o-rings will be needed. This allows airflow while the patient is locked in, and can then be compared to a lever assembly WITH o-rings.
- Walk the patient normally.
- Amputee may experience a difference in how the socket feels immediately, after some ambulation, or after reinstalling the o-rings. Patient feedback should be documented.

Call for more information on coding of the Easy-Off Lock: (208) 429-0026.

* It is the practitioner's responsibility to demonstrate, document, and select appropriate codes for insurance billing.

Additional Pins



Detach here and keep everything below with patient records

Patient name: _____

For tracking purpose, write LOT number (from funnel of lock) here: _____

CAUTION

1. Lever and lock do not lock automatically. Ensure lock is in the closed position; when lever is flush against socket, it is CLOSED (see Step 58.) Practitioner must give instructions on donning and doffing.
2. Use the 6x18mm screws provided with typical components. In atypical setups, longer screws may be needed. Always use screws class 10.9 or better.
3. Do not lubricate inside of lock, this will attract debris. If you have a noise issue, it is typically due to seating. Call for technical assistance.
4. Always use screws provided during lamination to ensure proper depth is created for attachment.
5. Never exceed 3 pin spacers.
6. Lay-up instructions are helpful hints on how to work with the lock and connector. Actual lay-ups are responsibility of the technician and/or practitioner.
7. Note number of clicks for engagement.
8. Liner threads vary. Begin threading pin into liner by hand whenever possible. A wrench will be needed in cases of tight threads.
9. Regardless of threading, always use Loctite 262 on lock pin threads. If installing into a plastic distal adapter Loctite® Primer 242 should also be used.
10. Do not use the CD103P11 long pin with the Drop-In Easy-Off Lock or the Drop-In Air-Lock. With most liners this longer pin will bottom out in the lock.
11. If using a flexible inner liner, do not leave plastic over lock housing, this can cause air leakage and other issues. You should laminate directly over housing. Contact Coyote for more information.