



Wave Suction Band

CD130BM, CD130BL, CD130BS,
CD130BX, CD130BXX



Fabrication Instructions

Weight limit: 265 lbs.

2-year warranty against manufacturer defects, excessive wear or breakage.



Advena Limited Tower Business Centre 2nd Flr, Tower Street Swatar, BKR 4013 Malta

Manufactured by Coyote®

419 N. Curtis Rd., Boise, Idaho 83706

(208) 429-0026 | www.coyote.us



Parts Included

Wave Suction Band

2 Oz. Silicone Adhesive

Wave Suction Band sizes

Part Number	Size	Circumference	Width	Thickness
CD130BS	Small	16cm - 25cm	7.62cm	4mm
CD130BM	Medium	25cm - 37cm	7.62cm	4mm
CD130BL	Large	37cm - 49cm	7.62cm	4mm
CD130BX	Extra Large	49cm - 64cm	7.62cm	4mm
CD130BXX	Extra Extra Large	64cm - 77cm	7.62cm	4mm



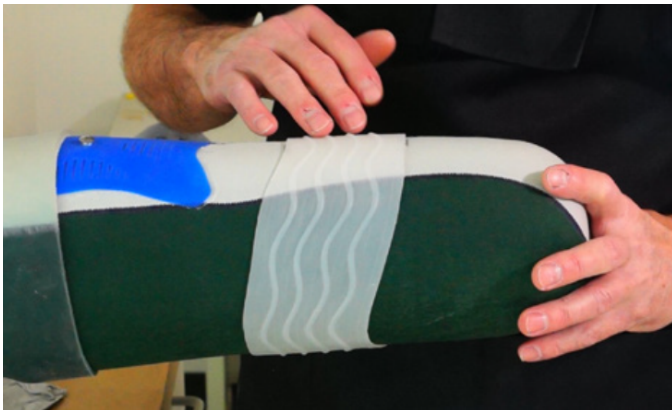
1 With liner on patient position band in desired location.



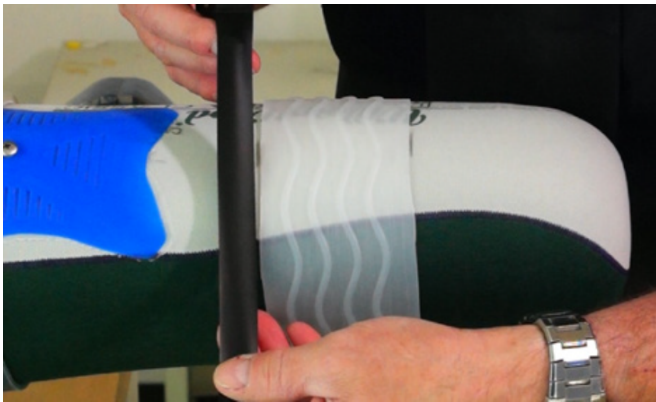
2 Mark band location on distal and proximal sides of band.



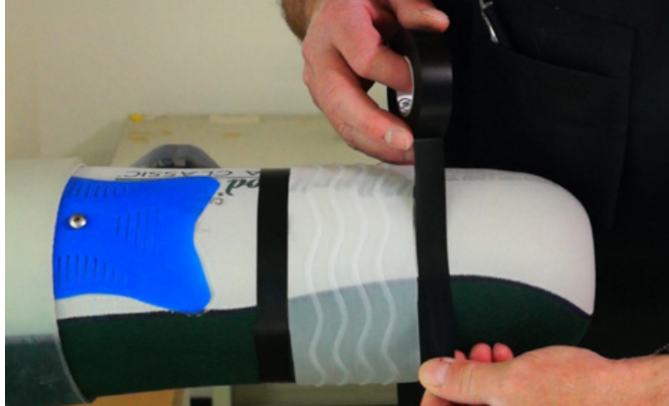
3 Mark band location on the proximal side.



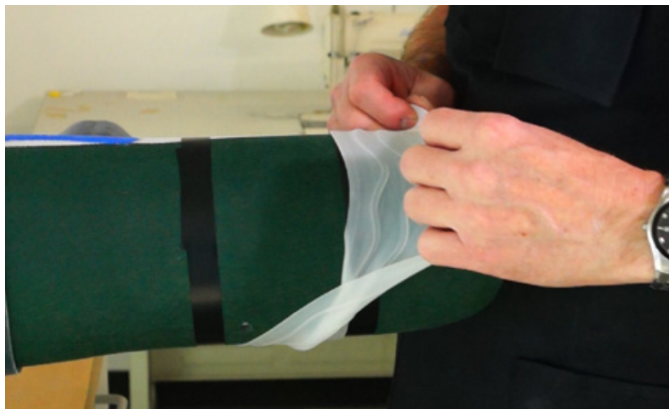
4 For unconventional band position mark band in multiple locations.



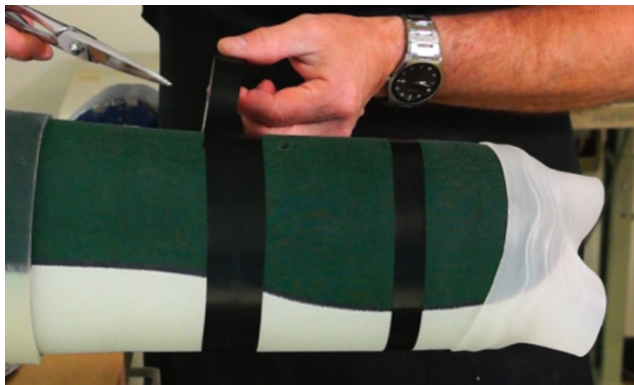
5 Wrap the liner with electrical tape or vinyl tape next to the band without overlapping it.



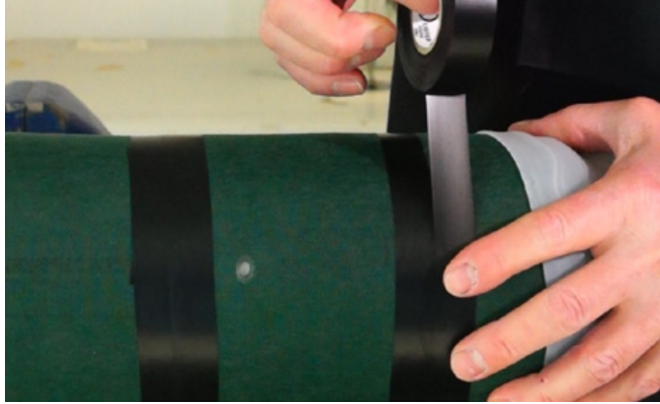
6 Tape off both ends of the band.



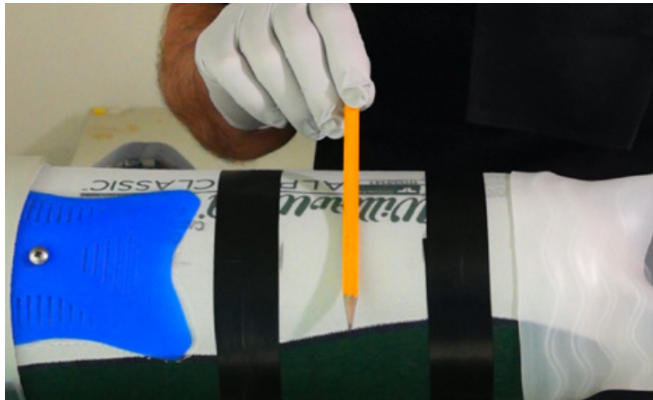
7 Remove the band



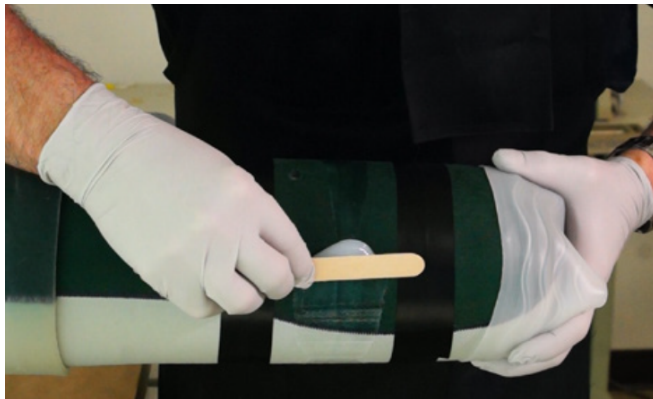
8 Add extra tape to protect a wider area.



9 Add protective tap on both sides.



10 Put a bead of silicone adhesive around the liner about the thickness of a pencil.



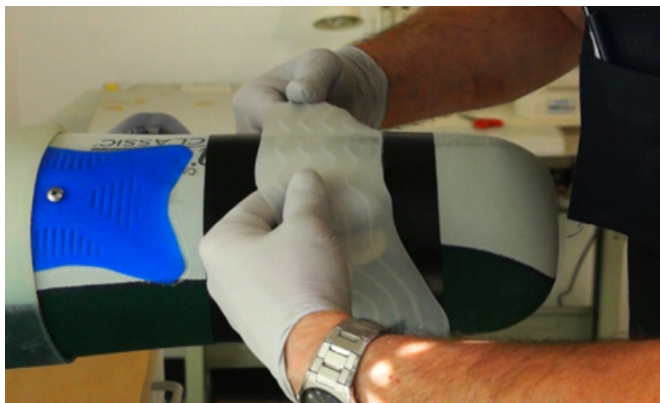
11 Smooth the silicone out with a tongue depressor. Make sure to saturate the material.



12 Check the edges for areas that need more silicone adhesive.



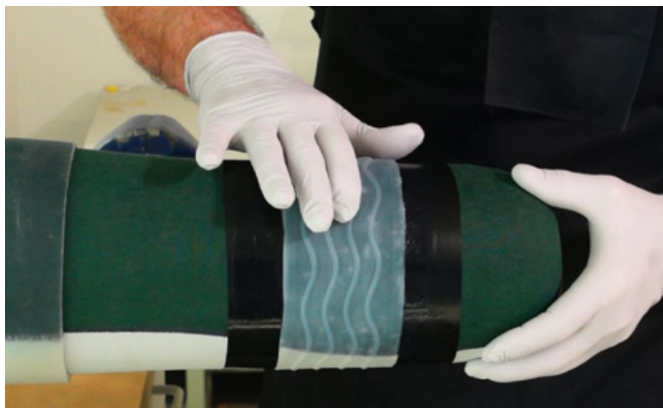
13 Smooth the silicone out.



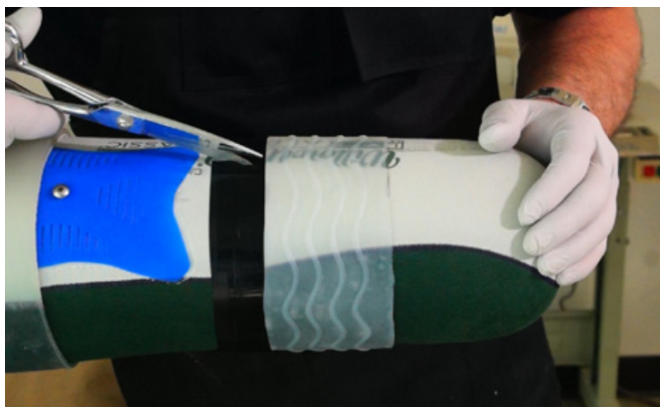
14 Carefully place the seal band over the glued area.



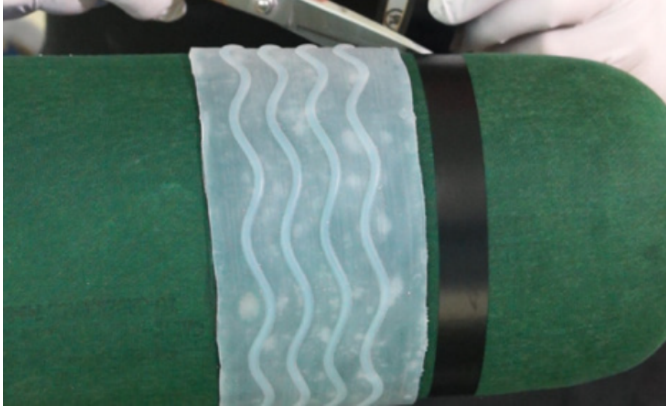
15 Center the band with tape to the edges.



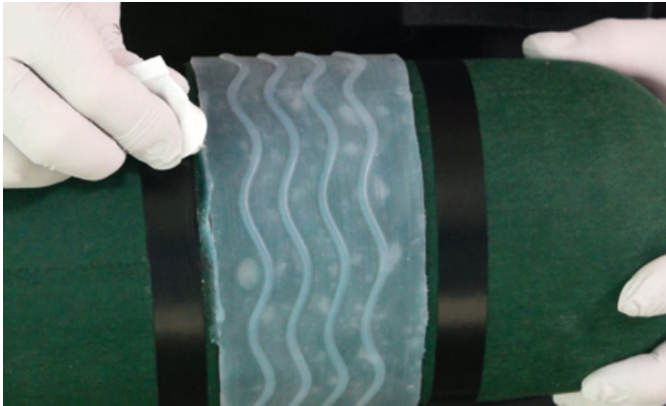
16 Push the air bubbles out from under the band



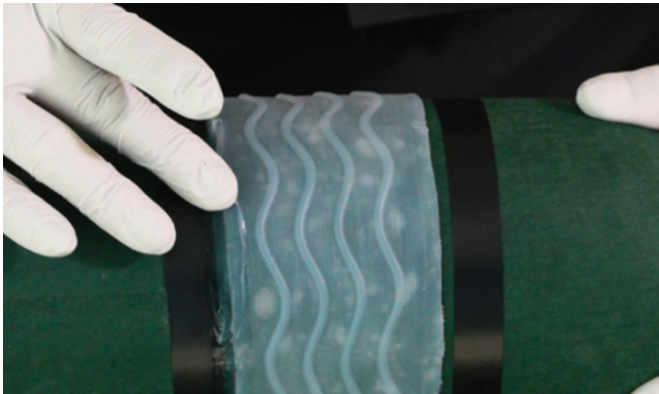
17 Remove the tape from the liner.



18 Create a seal band edge with silicone adhesive.



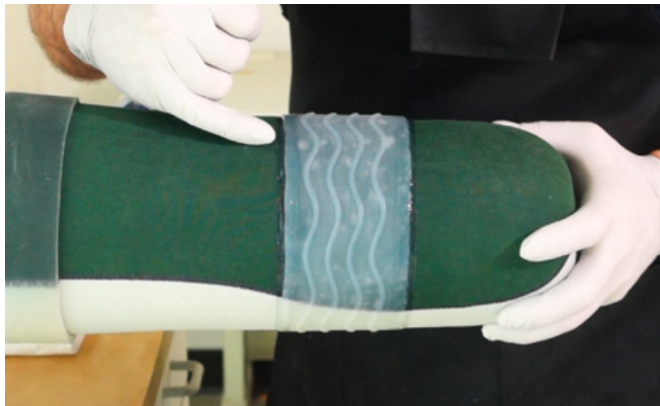
19 Roll tape next to band edge approximately 1/4 inch space from band.



20 Smooth silicone into fabric and band. Making a sealed edge.



21 Remove tape.



22 Check your work and let the silicone set up for at least two hours before putting it on patient.

Lay-up instructions are helpful hints on how to work with the lock and connector. Actual lay-ups are the responsibility of the technician and/or practitioner.